






Women's Entrepreneurship & Financial Literacy (WEFL) Programme

Empowering Women,
Transforming Futures

Our Mission

-  Foster entrepreneurial skills
-  Enhance financial literacy
-  Empower women across Africa



WEFL is available to Black women-owned businesses and aspiring entrepreneurs from South Africa and countries in our partner network.

Our Reach: A Growing Movement

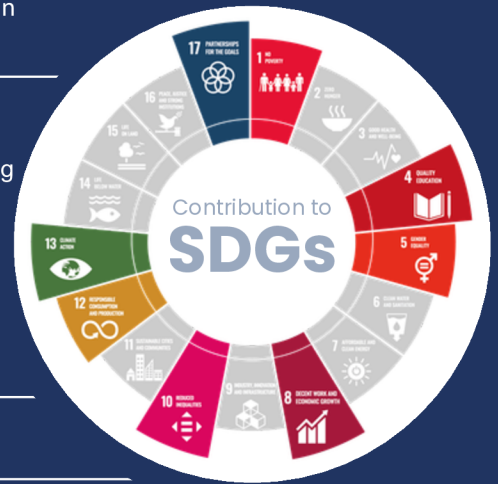
-  **445**
employees
55% female | 51% youth
-  **91**
women
empowered
-  **25**
aspiring
entrepreneurs
-  **21**
Malawian women
attended
-  **3640**
training hours
completed

The WEFL Journey: What We Teach

The course equips women to understand the foundations of entrepreneurship in Sub-Saharan Africa and explore new business opportunities, guided by expert facilitators from leading universities who are entrepreneurs themselves.

-  Problem - Solution Opportunity
-  The Business Activity
-  Financial Literacy
-  The Green Economy
-  Entrepreneurship Ecosystem

Project	PROJECT EMBRACE aims to economically mainstream Black women and youth through responsible market access and value chain transformation for an inclusive green economy
Objective	Implement a sustainable framework to boost Black women and youth participation in South Africa's green economy through strengthening an entrepreneurial ecosystem providing research, skills development, advocacy, employment, and entrepreneurship support.
Geographic Focus	Focused on South Africa, with reach into SADC and Sub-Saharan Africa.
Implemented by	South Africa Supplier Diversity Council NPC (SASDC)
Duration	01 Sept 2024 - 30 Jun 2027



Our Partners

Funded by:



Implemented by:



Get in Touch

+27 (0)11 100 1025

Gary Joseph
gary.joseph@sasdc.org.za

Glynnis Jackson
glynnis.jackson@sasdc.org.za

Ground Floor, Suite 10, Kopano on Empire
30 Wellington Road, Parktown
Johannesburg, 2193
South Africa

